

# SUSE<sup>®</sup> Linux Enterprise Desktop 10

June 2006

# Table of Contents

SUSE Linux Enterprise 10.....	4
SUSE Linux Enterprise Desktop.....	4
Quick Profile.....	4
Availability.....	4
Key Features.....	4
SUSE Linux Enterprise Desktop Feature Summary.....	5
Market-leading Usability.....	5
Dozens of Productivity Applications .....	5
Seamless Interoperability with Existing Systems.....	6
Easy Administration and Central Management.....	6
Detailed Feature List.....	7
Evaluation SUSE Linux Enterprise Desktop.....	7
Top Features.....	7
New User Interface.....	7
The Computer Menu.....	7
Application Browser.....	8
Control Center.....	9
Status Icons.....	9
Network Connectivity.....	9
Beagle Integrated Search.....	9
Xgl Enhanced 3-D Graphics.....	10
OpenOffice.org, Novell Edition.....	12
Evolution.....	13
Mozilla Firefox.....	16
RealPlayer.....	17
HW Plug and Play.....	17
Update Manager.....	18
AutoYaST.....	18

Pricing and Availability (This Needs to be Verified).....	19
Pricing.....	19
Availability.....	19
Product Upgrades.....	19
Support .....	19
Training.....	19
Consulting.....	19
Partners.....	20
System Requirements .....	20
Additional Resources.....	20
Summary.....	20
About Novell.....	20

## SUSE LINUX ENTERPRISE 10

SUSE Linux Enterprise 10 is the Platform for the Open Enterprise™. Novell designs SUSE Linux Enterprise to be the best-engineered, lowest-cost and most interoperable platform for enterprise computing. From the desktop to the data center, only SUSE Linux Enterprise offers a complete open source platform for the mission-critical applications that drive your business. When performance, reliability, security and world-class support really matter, organizations choose SUSE Linux Enterprise from Novell.

For the July 2006 launch, the SUSE Linux Enterprise 10 platform is composed of the following:

- **SUSE Linux Enterprise Server**—The best platform for mission-critical workloads in your data center
- **SUSE Linux Enterprise Desktop**—A general-purpose desktop designed for use across your enterprise
- **Novell Customer Center**—One location to obtain support, updates and renewals for all your SUSE Linux Enterprise product subscriptions

## SUSE LINUX ENTERPRISE DESKTOP

SUSE Linux Enterprise Desktop is the only enterprise-quality Linux desktop on the market designed for general-purpose business. Developed and backed by Novell, SUSE Linux Enterprise Desktop provides market-leading usability, seamless interoperability with existing enterprise computer systems and dozens of essential office applications. Deployable as a general-purpose desktop platform or tailored for use in thin- or thick-client configurations with fixed-function uses (such as kiosks, cash registers or high-end engineering workstations), SUSE Linux Enterprise Desktop provides unparalleled levels of flexibility for desktop clients. With SUSE Linux Enterprise Desktop, businesses can dramatically reduce costs, improve end-user security and increase workforce productivity.

## QUICK PROFILE

### Key Features

- **An all-in-one solution**—SUSE Linux Enterprise Desktop offers tightly integrated office applications essential in the workplace today: OpenOffice.org, Mozilla Firefox Web browser, Evolution collaboration tools, Gaim instant messenger and more.
- **Market-leading usability**—SUSE Linux Enterprise Desktop increases end-user productivity with a new graphical interface that minimizes the transition time to Linux.
- **Seamless interoperability**—The most interoperable Linux platform available, SUSE Linux Enterprise Desktop seamlessly integrates with existing computer infrastructure.
- **Open source innovation**—SUSE Linux Enterprise Desktop includes pre-installed innovative features such as Beagle integrated search, Banshee music management, F-Spot photo-library management and Tomboy note application.
- **Flexible deployment options**—SUSE Linux Enterprise Desktop is the only Linux desktop platform available for thick- or thin-client configurations or general officer-worker deployments to meet business requirements.

## SUSE LINUX ENTERPRISE DESKTOP FEATURE SUMMARY

### Market-leading Usability

Novell conducted hundreds of tests observing how office workers use SUSE Linux Enterprise Desktop. With the results, Novell implemented a “design first” development methodology to deliver an innovative desktop that provides a dramatically improved user experience. Consequently, SUSE Linux Enterprise Desktop users find it easy and familiar and are quickly productive.

New integrated search capabilities powered by Beagle provide real-time indexing throughout the entire desktop, delivering fast, easy access to all content. Users no longer need to worry about where or when they stored their work. Simple keyword searches return all documents, applications, e-mail, instant messages and recent Web searches all in a single results window.

In addition, its newly designed graphical environment has integrated search capabilities and comes loaded with powerful applications, setting a new benchmark for desktop ease of use. Through extensive research, Novell found ways to enhance user interaction with the desktop to increase productivity in the workplace. For instance, it created features like application tiling and alt tabbing, which allow users to quickly organize their desktops. The 3-D desktop interface gives users the ability to organize their work on the desktop more effectively than they can with existing (and more complex) solutions.

For companies looking to move to Linux on the desktop, SUSE Linux Enterprise Desktop increases productivity and minimizes the learning curve with an intuitive easy-to-use and easy-to-learn environment.

### Dozens of Productivity Applications

Novell is a leader in open source application innovation. The company maintains one of the industry's largest Linux-desktop development teams and is a significant contributor to many open source projects and applications, including Banshee, Beagle, F-Spot, OpenOffice.org and Tomboy, among others. Committed to Linux and open source, Novell contributes all code back to the open source community and has created [www.betterdesktop.org](http://www.betterdesktop.org) to share all usability data.

Novell is the second-largest contributor to the OpenOffice.org project and recently designed and implemented the Visual Basic macro interpreter, which eliminated one of the largest barriers to OpenOffice.org adoption. Within the Linux space, SUSE Linux Enterprise Desktop will introduce the first version of OpenOffice.org 2.0 to support and run Visual Basic macros saved in Excel spreadsheets. Moreover, SUSE Linux Enterprise Desktop offers the only complete office suite of productivity applications that are compatible with Microsoft Office.

SUSE Linux Enterprise Desktop ships with the following integrated applications:

- **Office suite**—The Novell edition of OpenOffice.org 2.0 comes as a complete office suite with advanced Microsoft-file compatibility, including Pivot Tables import and—for the first time—support for Excel Visual Basic spreadsheet macros.
- **Web**—This Mozilla Firefox-based Web browser is sponsored by AOL, Google, IBM, Novell and Sun.
- **Collaboration**—Novell Evolution ships with all the leading commercial Linux distributions and is the most widely used Linux collaboration client in the world. Novell Evolution features direct connections to Novell GroupWise®, Microsoft Exchange 2000/2003 and any collaboration server that supports the IMAP, SMTP and POP standards. Connectivity to Lotus Notes is available via the Notes plug-in for its Workplace Client Technology.

- **Instant messaging**—Gaim instant messenger supports popular public IM networks such as AOL, MSN, Jabber and Yahoo!. Support for Novell GroupWise Messenger is also included.
- **File organization**—Novell iFolder file access and management allows users to access, organize and manage their files from anywhere, any time.
- **Multimedia**—Multimedia support for Adobe, Macromedia and RealNetworks.

Additional integrated open source projects include:

- **Search functionality**—Beagle personal information management provides integrated search capabilities throughout the entire desktop.
- **Photo**—F-Spot photo-library management offers advanced support for photo importing, publishing, cataloging and versioning.
- **Music**—Banshee music management delivers a music management and playback application.
- **Notes**—Tomboy notes application provides a desktop note-taking application for Linux and UNIX.

### **Seamless Interoperability with Existing Systems**

SUSE Linux Enterprise Desktop interoperates with existing systems, enabling organizations to leverage their IT investments. Novell understands the need to reduce and contain costs, so SUSE Linux Enterprise Desktop was designed to easily coexist with Mac, UNIX, Windows and other operating systems; in fact, it is the *most* interoperable Linux desktop available today. SUSE Linux Enterprise Desktop works seamlessly with Novell GroupWise and Microsoft Exchange collaboration servers and will connect to Lotus Notes with the IBM Notes plug-in for Workplace Client Technology. SUSE Linux Enterprise Desktop also is fully compatible with Active Directory and other networking and directory standards. As a result, it is the first enterprise-class Linux desktop that can be deployed confidently to general knowledge workers.

Industry-supported standards include the following:

- Microsoft file-format fidelity in OpenOffice.org
- Printing and file protocols
- Multimedia content viewers
- Plug-n-play hardware for USB and Bluetooth
- Wireless networking
- Compliance with password and security regulations
- Collaboration tools, including Evolution, GroupWise, Lotus and Microsoft

### **Easy Administration and Central Management**

Deployable as a general-purpose desktop platform or tailored for use in thin- or thick-client configurations, SUSE Linux Enterprise Desktop can easily be administered and centrally managed to meet business requirements. In thin-client or fixed-function environments, deployments can be further customized with lockdown desktop features and application containment with Novell AppArmor.

YaST is a comprehensive installation, configuration and administration suite unique to the SUSE Linux Enterprise 10 platform and includes desktop configuration, end-user settings and connections to network resources. AutoYaST is a time-saving tool that automatically performs installation and configuration on similar servers.

Novell ZENworks® Linux Management complements YaST by enabling IT administrators to centrally control how they deploy and update their entire data centers and the systems inside the firewall, enabling dramatic IT savings.

## EVALUATION SUSE LINUX ENTERPRISE DESKTOP


### Top Features

SUSE Linux Enterprise Desktop:

- Is the leading Linux desktop for businesses today, an all-in-one solution providing a complete environment for the basic office worker.
- Delivers breakthrough usability enhancements that create a familiar environment so that new users are quickly productive.
- Delivers powerful and interoperable applications.
- Provides easy-to-use centralized administration tools.


Required file: Hypocycloid.xls

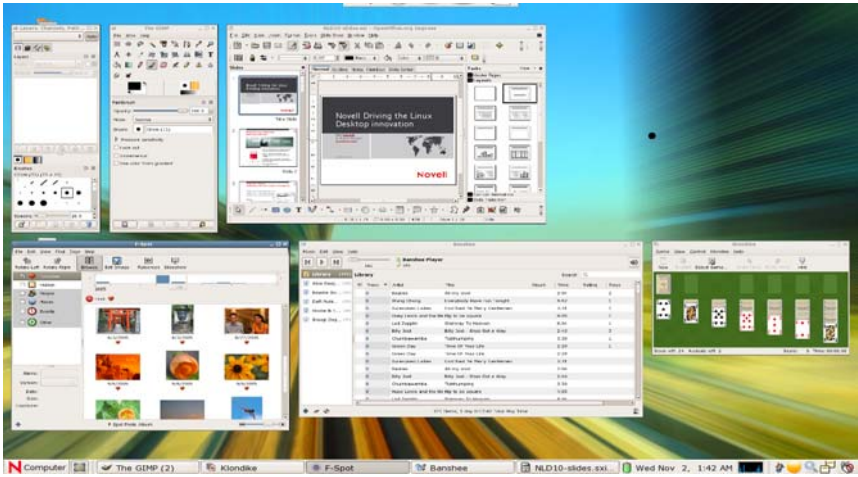
Feature	Script	Action
<b>New User Interface</b>	Novell conducted hundreds of usability tests to make SUSE Linux Enterprise Desktop an exceptional experience. As a result of these studies, Novell created a familiar design that will quickly make users comfortable. In addition, Novell recognized that productivity is an important part of total cost of ownership and consequently included enhancements that make users more efficient.	
<b>The Computer Menu</b>	SUSE Linux Enterprise Desktop includes a newly designed user interface. Novell learned that naming controls help users navigate the desktop and become familiar with a new environment. The new computer menu is the central control for the desktop, which navigates system applications, system controls and status. This menu lets users access anything they need, including documents, settings and applications. This single location provides access to status information like hard-drive space and network connectivity, which is helpful for IT support staff.  A simple click of an application icon will launch the application. Favorite applications can be expanded or retracted as well as locked down.	<ul style="list-style-type: none"><li>• Click the computer button in the lower-left corner of the desktop.</li></ul>


Feature	Script	Action
	 <p data-bbox="634 768 1122 800">The Computer Menu and Application Browser</p>	
<p data-bbox="290 846 423 898"><b>Application Browser</b></p>	<p data-bbox="492 825 967 1066">The new application browser allows users to create and easily locate application categories. Users can search by category, name or generic description of the application; the application will be located as the user types.</p>	<ul data-bbox="1044 825 1461 1633" style="list-style-type: none"> <li>• From the Computer button, click the More Applications button. This allows you to search for applications or view all applications.</li> <li>• To search for applications installed on the system, use the filter dialog.</li> <li>• Enter “spre” in the filter dialog. As you type, the application list is filtered. This search returns OpenOffice.org Calc Spreadsheet application.</li> <li>• You can easily add this application to the Computer menu favorites list by right-clicking it and selecting Add to Favorites.</li> <li>• Click the Computer button again and notice that the application has been added to your favorites.</li> </ul>
<p data-bbox="290 1686 461 1717"><b>Control Center</b></p>	<p data-bbox="492 1665 967 1864">Central controls provide access to modify the desktop and personalize the environment. Users can easily modify their desktop backgrounds, wallpaper, screensavers or screen resolutions.</p>	<ul data-bbox="1044 1665 1445 1923" style="list-style-type: none"> <li>• Click the Computer button again.</li> <li>• Click Control Center.</li> <li>• Under Groups, click Look and Feel.</li> <li>• Notice the various ways you can personalize your desktop.</li> </ul>



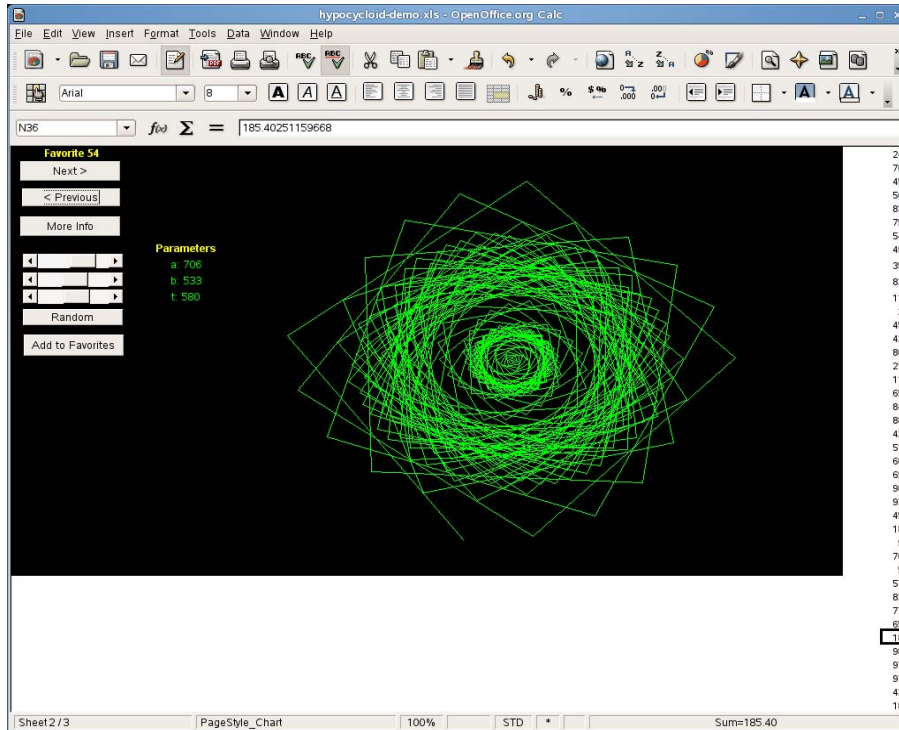
Feature	Script	Action
<b>Status Icons</b>	Interactive status icons provide access to systems status information.	<ul style="list-style-type: none"> <li>Click the status icons in the bottom-right corner of the screen. Here you will find power status, volume control, screen resolution, and network-connectivity information.</li> </ul>
<b>Network Connectivity</b>	<p>From the network connectivity status icon, users can easily connect to wireless or wired networks as well as configure SSID. They also have the ability to connect to virtual private networks (VPNs). Most common VPNs are supported.</p> <p>The desktop seamlessly connects to mixed networks (including eDirectory and Active Directory and most other flavors of LDAP). Regardless of the operating system—Linux, UNIX or Windows—the desktop works seamlessly.</p>	<ul style="list-style-type: none"> <li>Click on the network connection and change your network connectivity (for example, from wired to wireless).</li> </ul>
<b>Beagle Integrated Search</b>	<p>Novell participated in a project to optimize the Linux kernel to be able to index data in real time. At the same time, Novell worked on its own project—Beagle—to be able to present content through an instantaneous search .</p> <p>One of the most common and time-consuming tasks for users is finding various files and data that have been stored on their hard drive. To solve this problem, Novell has included integrated search capabilities throughout the operating system. Users have fast and easy access to <i>all</i> content on their desktop; they no longer have to worry about where or when they saved their data since they can search for it in relevant terms.</p> <p>The search-results window appears displaying all documents that contained the key word. Simply clicking on the document will launch its associated application, and the user can begin working. But because</p>	<ul style="list-style-type: none"> <li>Click the Computer button.</li> <li>Enter “Linux” into the search dialog box.</li> <li>Select the Enter key.</li> </ul> <p>Second search:</p> <ul style="list-style-type: none"> <li>Click the Computer button.</li> <li>Enter any text in the search dialog</li> </ul>

Feature	Script	Action
	<p>searches must also be able to find appointments, e-mails instant messages and so forth, a second search can show that xxx instant message contained these search results. Since an instant messenger isn't actually running, a viewer displays the data.</p>	<p>box.</p> <ul style="list-style-type: none"> <li>• Select the Enter key.</li> </ul>
<div style="text-align: center;">  <p>Beagle Integrated Search</p> </div>		
<p><b>Xgl Enhanced 3-D Graphics</b></p>	<p>Novell spent a lot of time bringing graphics capability to the desktop to increase productivity. Research showed ways to enhance how users interact with the desktop to help them be more productive.</p> <p><b>Alt Tab:</b> Alt Tab provides the ability to tab through open applications. Traditionally, only the open applications' icons have been displayed, making it difficult to identify which application to select when many copies of the same application are open. This new Alt Tab provides a thumbnail view of the application. Now it is easy to select a specific version of the running application. In addition, the graphic subsystem highlights the application in the main window.</p> <p>Notice the movie continues to run, even in the</p>	<p><b>Alt Tab</b></p> <ul style="list-style-type: none"> <li>• Launch Mozilla</li> <li>• Launch Evolution</li> <li>• Launch OpenOffice</li> <li>• Start the Madagascar movie in RealPlayer or from <a href="http://www.novell.com/events/videos/">www.novell.com/events/videos/</a></li> <li>• Select ALT + TAB. See the thumbnail views of all the applications running.</li> </ul> <p><b>Application Tiling</b></p>

Feature	Script	Action
	<p>thumbnail and in the background. SUSE Linux Enterprise Desktop is the only desktop that has this real-time window feature.</p> <p><b>Application Tiling:</b> Another common desktop issue is having many open applications on the desktop. Now, with one button, users can rearrange them to provide a single view of all open applications. This snapshot view of the desktop makes locating applications quick and easy.</p>	<ul style="list-style-type: none"> <li>• Select Control Center from the Computer menu.</li> <li>• Under Look and Feel, select Desktop Effects.</li> <li>• Select the Other Features tab.</li> <li>• Modify the Window Picker option.</li> <li>• Check When I move the mouse to the left corner.</li> </ul>
 <p>Application Tiling</p>		
	<p><b>Zoom:</b> Novell recognized that user accessibility—particularly for disabled users—could be greatly improved. The new graphic subsystem allows for easy zooming of any desktop content.</p> <p><b>3-D Workspace:</b> Today, desktops require huge amounts of processor power and memory. Novell found that users quickly run out of desktop space and have difficulty organizing their desktops. Through the power of Xgl, Novell has created a virtual desktop that presents itself as a cube. Users can rotate it or click on their desktops to move it.</p>	<p><b>Zoom</b></p> <ul style="list-style-type: none"> <li>• Select Control Center from the Computer menu.</li> <li>• Under Look and Feel, select Desktop Effects.</li> <li>• Select the Other Features tab.</li> <li>• Modify the Zoom option.</li> <li>• Check Zoom in and out when I use the scroll wheel with:</li> <li>• Check Control</li> </ul> <p><b>3D Workspace</b></p> <ul style="list-style-type: none"> <li>• Hold ctrl + alt+ arrow.</li> </ul> <p style="text-align: center;"><i>or</i></p>

Feature	Script	Action
		<ul style="list-style-type: none"> <li>• Hold ctrl + alt+ shift arrow to move applications around on the cube.</li> </ul>
<div style="text-align: center;">  <p data-bbox="760 936 927 963">3-D Workspace</p> </div>		
<p data-bbox="290 1014 475 1066"><b>OpenOffice.org, Novell Edition</b></p>	<p data-bbox="490 995 984 1276">Novell realizes office-productivity tools are a critical part of lowering the the total cost of ownership. Therefore, Novell committed to becoming one of the largest contributors to OpenOffice.org. In doing so, it has enhanced the user experience of OpenOffice.org so that little or no retraining is required.</p> <p data-bbox="490 1308 984 1589">It supports font transitions and layouts, making documents completely interoperable with Microsoft Office. Users will find that they can seamlessly receive and send documents in Microsoft file formats. This support includes the OpenOffice writer, presentation and spreadsheet tools.</p> <p data-bbox="490 1621 984 1776">Finally, to advance OpenOffice.org, Novell designed support of native Visual Basic macros and pivot tables, eliminating the largest barrier in OpenOffice adoption.</p> <p data-bbox="490 1808 984 1913">All changes have been contributed to OpenOffice.org. However, not all have been incorporated yet. To get them, users need the</p>	<ul style="list-style-type: none"> <li>• Right mouse button on the hypocycloid.xls spreadsheet. This is a native Microsoft spreadsheet found on Google.</li> <li>• Select Open with OpenOffice.org Calc.</li> <li>• Click Enable Macros. The Microsoft Excel spreadsheet with macros is now open in OpenOffice.org Calc.</li> <li>• Click on Next or Previous buttons and see the macros at work.</li> <li>• From OpenOffice.org Calc tools menu, select Macros.</li> <li>• Select Organize Macros.</li> <li>• Select OpenOffice.org Basic.</li> <li>• From the OpenOffice.org Basic window, select the hypocycloid demo, then module. You will now see the macros in the existing macros window.</li> </ul>

Feature	Script	Action
	Novell edition of OpenOffice.org.	<ul style="list-style-type: none"> <li>Select a macro. Select the Edit button. This is the macro code as part of the hypocycloid.</li> </ul> <p><b>NOTE:</b> You can also export documents directly to pdf.</p> <ul style="list-style-type: none"> <li>Move your mouse over the toolbar and notice the icon on it.</li> </ul>



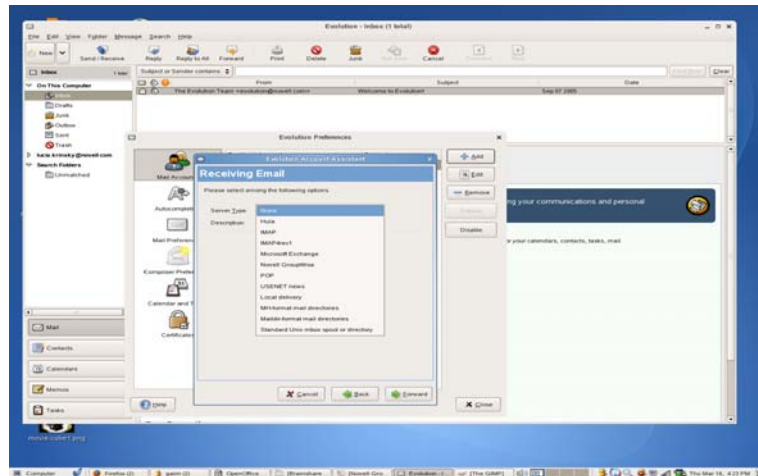
Hypocycloid.xls (Native Visual Basic Macro Support)

<b>Evolution</b>	<p>Novell Evolution is the most widely used Linux collaboration client in the world and ships with all the leading commercial Linux distributions. It is a complete e-mail client that seamlessly integrates e-mail, calendars, contact management and task lists in one easy-to-use application. Designed to meet the needs of enterprise users who must manage large volumes of e-mail, Novell Evolution offers comprehensive e-mail management, including vFolder. This feature allows users to create powerful contextual views of inbound and outbound e-mail.</p>	<p>Mail: Junk mail and vFolders.</p> <ul style="list-style-type: none"> <li>Launch Evolution: A Microsoft Outlook look user would feel very comfortable with this user interface.</li> <li>Show mail, calendar, contacts and tasks selections in the lower-left corner</li> <li>Select Mail. Supported mail protocols include IMAP, POP, SMTP and Microsoft Exchange 2000 and 2003.</li> <li>Show the View Options. Users</li> </ul>
------------------	---	--

Feature	Script	Action
	<p>In another area of key interoperability, Novell Evolution features direct connections to Novell GroupWise, Microsoft Exchange 2000/2003 and any collaboration server that supports the IMAP, SMTP or POP standards. Additionally, Novell is partnering with Lotus to create a native client for Linux.</p>	<p>can view e-mail chronologically, by author or by thread.</p> <ul style="list-style-type: none"> <li>• Select the Junk mail and not Junk buttons.</li> <li>• Select the Tools menu, then Virtual Folders Editor, which launches the vFolder dialog box. This is a way to customize folders, providing convenient access and organization to messages. It's like a cross between a search and a filter rule.</li> <li>• Select Add.</li> <li>• Name a rule in the Add Rule dialog box.</li> <li>• Enter a valid e-mail address for the if rule in the sender/contains section.</li> <li>• Specify the vFolder sources (such as "All local and remote folders").</li> <li>• Select OK.</li> <li>• In Evolution, you should now see your named rule in the vFolder list.</li> <li>• Open the folder and see the messages in the folder from the sources you selected.</li> </ul> <p>Calendar:</p> <ul style="list-style-type: none"> <li>• Select the Calendar button from the lower left of the window</li> <li>• Discuss the possible views.</li> <li>• Select New, then Meeting. Walk through the dialog box options. Using Group Scheduling, you can schedule</li> </ul>

Feature	Script	Action
		<p>meetings, view attendee availability and allocate resources with other users in the organization running Novell GroupWise or Microsoft Exchange.</p> <ul style="list-style-type: none"> <li>• Select New, then Calendar.</li> <li>• Select “From the Web” as the type of the calendar.</li> <li>• Select a valid ical from <a href="http://www.apple.com/ical/library/">www.apple.com/ical/library/</a>. Enter the http address of the ics file.</li> <li>• From Evolution, you should now see the calendar added to your list of calendars. All the new items should appear. (If not, they could be loading from the network. Be sure there are events in the timeframe you have displayed.)</li> <li>• Click the check-box next to one of the calendars to hide it. Check it to make it reappear. The calendar overlay feature lets users compare different calendars against each other, then hide them when they want to focus on one set of events.</li> </ul> <p>Contacts:</p> <ul style="list-style-type: none"> <li>• Select the Contacts button from the lower-left window. Notice that you can manage your personal addresses as well as those on LDAP servers.</li> <li>• What's supported: Native connections to eDirectory are currently in beta; Active Directory works fine.</li> <li>• OPTIONAL: Drag a picture to</li> </ul>

Feature	Script	Action
		<p>the face icon; it will be associated with the address card.</p> <p>Tasks:</p> <ul style="list-style-type: none"> <li>• Select the Task button to manage tasks.</li> <li>• Select your panel clock. Today's appointments and pending tasks appear in the panel clock because Evolution is integrated with the SUSE Linux Enterprise Desktop system clock. Even if Evolution is not running, you have access to your appointments and tasks.</li> </ul>

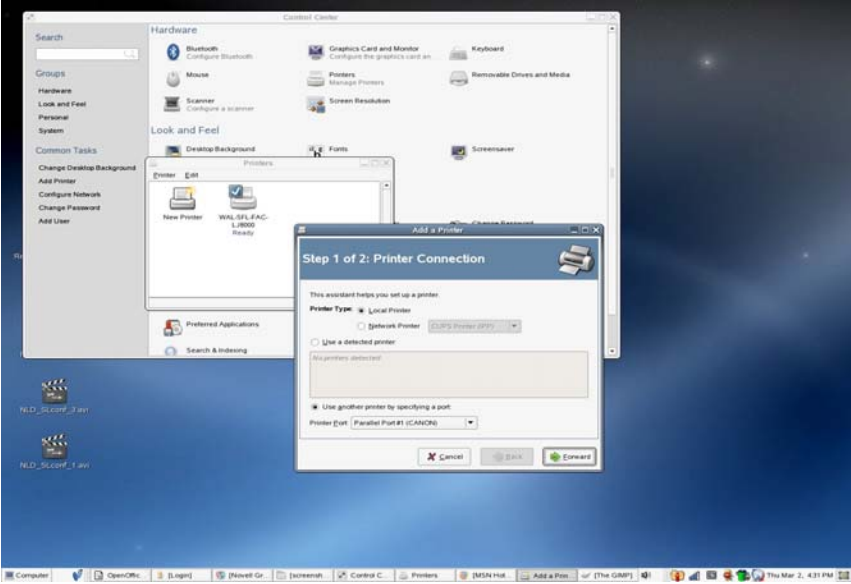


Evolution Connectivity to GroupWise, Exchange and Notes

<p><b>Mozilla Firefox</b></p>	<p>The Mozilla Firefox Web browser is sponsored by AOL, IBM, Google, Novell and Sun. Its broad standards support and compatibility features mean that it works with many Web pages and applications that would otherwise require Microsoft Internet Explorer.</p>	<p>Tabbed Windows and Popup Blocking:</p> <ul style="list-style-type: none"> <li>• Launch Firefox.</li> <li>• Select Ctrl T to create the tabbed window and launch the bookmark you created. (Ctrl W will remove the tab.) Each is easily available by simply selecting a tab.</li> <li>• Select Edit, then Preferences.</li> <li>• Note the Block Popup Windows check box. You can demonstrate this option turning the check box off and on and going to a site you know uses popup ads, such as</li> </ul>
-------------------------------	---	--



Feature	Script	Action
		<p>cnn.com.</p> <ul style="list-style-type: none"> <li>Firefox will tell you that it has blocked new windows and will ask if you want to see them—this is useful for some pages that use popups for navigation.</li> </ul>
<b>RealPlayer</b>	<p>Novell has partnered with multimedia vendors Adobe, Macromedia and RealNetworks, providing tight integration with pdf, flash and movies. For example, SUSE Linux Enterprise Desktop includes RealPlayer from RealNetworks, which makes viewing multimedia files and streaming audio or video feeds, creating CDs and DVDs and performing other multimedia tasks easy. While these applications have traditionally run on Windows, with new industry support, they now run on Linux as well. Windows media and video code decs are also supported.</p>	<ul style="list-style-type: none"> <li>From within Firefox, launch <a href="http://www.novell.com/events/videos">www.novell.com/events/videos</a>.</li> <li>Run the “Interface” video or any other that uses the RealMedia format.</li> </ul>
<b>HW Plug and Play</b>	<p>Novell has spent significant time enabling the system with driver and independent hardware vendors to the desktop to work with a wide array of devices. Users who have a USB device should expect it to work as designed with a keyboard, a mouse or handheld devices from various manufacturers as well as with Apple iPods and MP3 players.</p>	<p><b>Add Printer</b></p> <ul style="list-style-type: none"> <li>Click the computer menu.</li> <li>Click Control Center under the system list.</li> <li>Click Add Printer under common tasks.</li> <li>Select Printer from the Printers dialog box.</li> <li>Select Add printer.</li> <li>Log on as root and add your printer.</li> </ul>

Feature	Script	Action
		 <p data-bbox="818 898 938 926">Add Printer</p>
<p data-bbox="290 974 480 1001"><b>Update Manager</b></p>	<p data-bbox="493 957 984 1276">SUSE Linux Enterprise Desktop can be deployed and configured using Novell ZENworks Linux Management. Administrators can easily manage updates to users' machines against a ZENworks server. This industry-leading resource-management solution offers a significant cost advantage over home-grown or competing solutions.</p>	<ul data-bbox="1089 1010 1455 1226" style="list-style-type: none"> <li data-bbox="1089 1010 1455 1226">• You can easily see available updates, installed software, available software and history; you can also select items you would like to install or update from the ZENworks server.</li> </ul>
<p data-bbox="290 1329 407 1356"><b>AutoYaST</b></p>	<p data-bbox="493 1312 984 1717">Since SUSE Linux Enterprise Desktop shares a common code base with the entire SUSE Linux Enterprise 10 platform, users have access to tools like AutoYaST for enterprise installation and deployment. AutoYaST allows unattended and automated installation. With AutoYaST, administrators can create a consistent baseline configuration for new installations in large or expanding deployments.</p>	<ul data-bbox="1089 1308 1455 1724" style="list-style-type: none"> <li data-bbox="1089 1308 1455 1409">• Launch AutoYaST. Select System, then Administrator Settings.</li> <li data-bbox="1089 1440 1455 1499">• From the YaST Control Center window, select the "Misc" item.</li> <li data-bbox="1089 1530 1455 1556">• Select "Automatic Installation."</li> <li data-bbox="1089 1587 1455 1724">• Select Tools, then Create Reference Profiles. Create profiles you can replicate across the enterprise.</li> </ul>

## **PRICING AND AVAILABILITY**

### **Pricing**

SUSE Linux Enterprise Desktop 10 for x86 hardware is currently available from resellers and solution providers.

The suggested retail price for SUSE Linux Enterprise Desktop for x86—one-device subscription is US\$50.

For detailed pricing, support and upgrade options, see the Novell Product Announcement or the Novell price list.

### **Availability**

Novell.com and Novell Authorized Resellers and Solution Providers

### **Product Upgrades**

Current Novell Linux Desktop subscribers are entitled to SUSE Linux Enterprise Desktop through the duration of their subscriptions. No amortizations based on price differences.

## **NOVELL GLOBAL SERVICES**

### **Support**

Novell provides enterprise-ready technical services and support to help you achieve your business objectives through multivendor expertise and customizable support options. Professional, flexible services are customer-focused—not product-driven—and backed by more than 20 years' experience in building and supporting technical solutions for the enterprise. The global Novell technical support team is the largest among all Linux vendors, and Novell is the only organization that offers comprehensive support for the entire Linux environment.

### **Training**

Novell Training Services is committed to the businesses that integrate Novell products and solutions. We provide a variety of training services to meet your business needs:

- Instructor-led training
- Online training
- Custom training
- Self-Study kits
- QuickStart cards

### **Consulting**

Novell Consulting provides customers with thought leadership, experience, best practices, methodologies and tools that ensure successful implementation of Novell solutions. Services include strategy, project management, architecture, development, training, support and managed services for heterogeneous environments. Expertise covers the gamut of Software for the Open Enterprise: data center, security and identity, resource management, workgroup and desktop solutions. In addition to ensuring a successful implementation, seasoned experts help minimize implementation time, reduce risk and maximize return on investment.

## Partners

With more than 800 members in the Novell Technology Partner program, Novell offers a robust network of industry partners who stand ready to help you get the most from your Novell investment. 1,700 partners are certified on SUSE Linux and 2,400 certified on other Novell products.

For more information on services associated with SUSE Linux Enterprise Desktop, please visit the following sites:

- Support services: [http://support.novell.com/support\\_options.html](http://support.novell.com/support_options.html)
- Training: [www.novell.com/training](http://www.novell.com/training)
- Consulting: [www.novell.com/consulting](http://www.novell.com/consulting)

## SYSTEM REQUIREMENTS

- Personal computer with an Intel Pentium\* III 500 MHz or higher processor (Intel Pentium 4 2.4 GHz or higher , any AMD\*, AMD64 or Intel\* EM64T processor recommended)
- 256 MB physical RAM (512 MB recommended)
- 800 MB available disk space (2.5 GB recommended)
- 800x600 display resolution (1024x768 or higher recommended)

## ADDITIONAL RESOURCES

For more information on:

- SUSE Linux Enterprise 10, visit [www.novell.com/linux](http://www.novell.com/linux)
- SUSE Linux Enterprise Server 10, visit [www.novell.com/products/linuxenterpriseserver](http://www.novell.com/products/linuxenterpriseserver)
- SUSE Linux Enterprise Desktop 10, visit [www.novell.com/products/desktop](http://www.novell.com/products/desktop)

## SUMMARY

SUSE Linux Enterprise Desktop 10 is the leading business desktop. Developed and backed by Novell, it provides market-leading usability, seamless interoperability with existing enterprise systems and dozens of essential productivity applications. It is deployable as a general-purpose desktop platform or tailored for use in thin- or thick-client configurations. As a result, businesses can dramatically reduce costs, improve end-user security and increase operational flexibility.

## ABOUT NOVELL

Novell, Inc. (Nasdaq: NOVL) delivers Software for the Open Enterprise™. With more than 50,000 customers in 43 countries, Novell helps customers manage, simplify, secure and integrate their technology environments by leveraging best-of-breed, open standards-based software. With more than 20 years of experience, more than 5,000 employees, 5,000 partners and support centers around the world, Novell helps customers gain control over their IT operating environments while reducing cost.

Find more information about Novell by visiting [www.novell.com](http://www.novell.com) or by calling the Novell Customer Response Center at 888 321 4CRC (4272). Members of the press should visit [www.novell.com/pressroom](http://www.novell.com/pressroom).